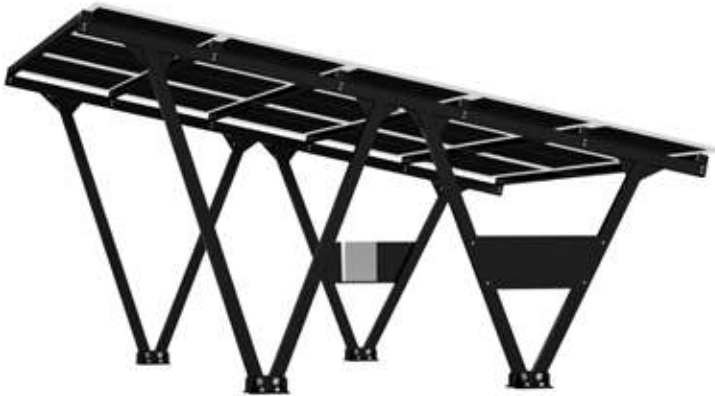


CARPORT

CHARACTERISTIC

Carport is characterized by the unique, modern design. The built-in inverter holder and modular design allow for easy assembly and the creation of up to two charging points for electric vehicles. Specially prepared by the Research and Development department mounting system was analyzed in terms of resistance to winds and other meteorological conditions. Installed Bifacial modules protect cars from overheating on hot days, and against snow and frosty rain during winter.



- MODULAR SYSTEM DESIGN
- INVERTER HOLDER
- MODERN DESIGN
- EASY TO ASSEMBLE
- OPTIMIZED ASSEMBLY TIME
- SERVICE FREE AND INDEPENDENT SYSTEM
- PARKING SPACE FOR TWO VEHICLES

APPLIANCE

Carport is dedicated to both private users and investments in large-area car parks. Proportional dimensions allow for the assembly of structure in the south and east-west arrangement. The specially selected angle guarantees the self-cleaning of the surface of the modules, thanks to which it does not require additional user service.

SYSTEM CAN BE CUSTOMIZED FOR INDIVIDUAL ORDERS.

TECHNICAL INFORMATION

Technical information	
NUMBER OF PV MODULES	15 pieces
PLACE OF MONTAGE FOR INVERTER / CHARGER	2 pieces
TYPE OF CONSTRUCTION	Construction made by screw
PREPARATORY	Foundations
COLOR	Black
WIDTH [mm]	6080
HEIGHT MAX [mm]	3300
HEIGHT MIN [mm]	2000
LENGTH [mm]	5770
CONSTRUCTION ANGLE	12°
MATERIAL	Steel with powder coating
WEIGHT [Kg]	~ 1050 kg

TECHNICAL DRAWING

